



HOSTED BY VALLEY
VETERANS (RCT)



GIG
CYMRU
NHS
WALES

Bwrdd Iechyd Prifysgol
Cwm Taf
University Health Board

Veterans and Armed Forces health and wellbeing event - Final briefing for stallholders

This detailed briefing is to support your attendance at our exciting Veterans and Armed Forces community event on Thursday 26 June 2025.

If you have any unanswered questions, or need further support before the event, please contact:

Natasha.Weeks2@wales.nhs.uk or Kelly.Hallett@wales.nhs.uk.

Thank you in advance for supporting this special day for our Armed Forces community in Cwm Taf Morgannwg.

1. Event overview

Date: Thursday 26 June 2025 (during Armed Forces Week)

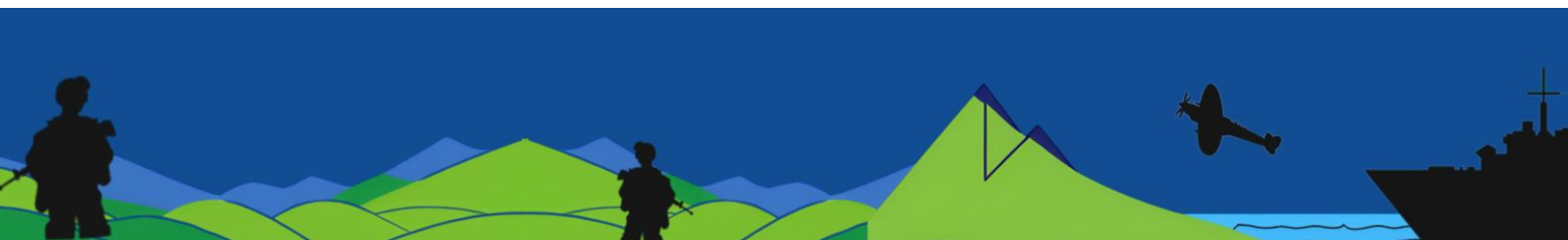
Time: 9.30am- 12.30pm.

Address:

Hosted by Valley Veterans
Ton & Gelli Community Centre
Dinam Park,
Ton Pentre, CF41 7DX

Event purpose

A first-of-its-kind collaboration dedicated to the health and wellbeing of Veterans, their families and the wider Armed Forces community in Cwm Taf Morgannwg. This landmark event brings together health board professionals from across a diverse range of services with Veteran accredited GPs, local authority and third sector partners, veteran hubs and the wider armed forces community, to unite in support of those who





HOSTED BY VALLEY
VETERANS (RCT)



GIG
CYMRU
NHS
WALES

Bwrdd Iechyd Prifysgol
Cwm Taf
University Health Board

have served. With expert speakers, interactive information stalls and valuable resources, we will work together to understand and enhance the

health and care needs of veterans, their families and the wider armed forces community across CTM.

This event is being significantly held during Armed Forces Week; providing an opportunity to celebrate and honour all individuals living in our region who have served for our country.

Audience

We are expecting over 150 attendees.

Event agenda

Attached with this briefing.

2. Information for stall holders

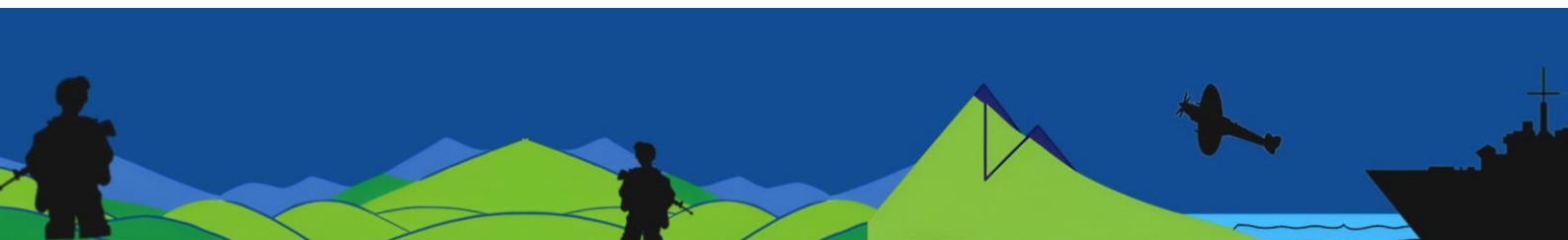
Set Up

There are two halls within the Valley Veterans Community Centre, both connected to one another. When you access the main building you will be directed to the marketplace hall by the event registration team.

We would kindly ask that all stall holders set up at Valley Veterans on **Wednesday, 25 June, anytime between 1:00pm – 5:00pm.** If you are unable to attend during this allocated set-up window or have any questions, please contact Kelly Hallett ASAP at Kelly.Hallett@wales.nhs.uk.

Please ask for **Donna Morgan** or **Kelly Hallett** on arrival on both days.

Please ensure that your stall is ready for business by **9am on Thursday 26 June.**





HOSTED BY VALLEY
VETERANS (RCT)



GIG
CYMRU
NHS
WALES

Bwrdd Iechyd Prifysgol
Cwm Taf
University Health Board

Shut Down

Please be prepared for a busy period at the end of the event so we advise that you stagger your leaving times to avoid congestion leaving the car park (details of where to park is provided below).

Stall Support

Each stall holder will have access to

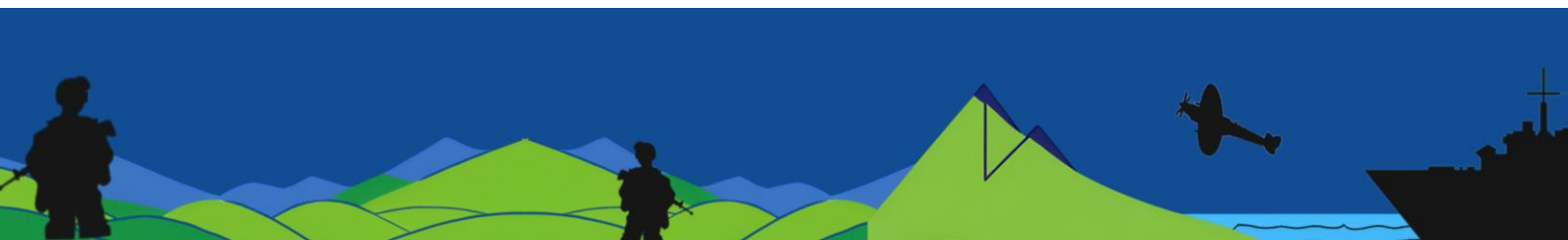
- Table space and stall signage
- Min. 1 chair per table
- Power access - stands will NOT have access to electrical sockets but there will be a charging station in the hall - which will be pointed out to you when you register.
- Water: There will be no water station in the marketplace but the venue has a kitchen with drinkable water - please bring a refillable water bottle with you.
- WIFI- the code will be on your tables
- Evaluation form (printed copies and a QR codes linking to the e – version).

Lunch and refreshments

Will be included for everyone. Food will be labelled with dietary information where possible. However, we encourage all guests to remain mindful and check with staff if they have any allergies or specific dietary requirements.

Safety and first aid

Should you require any medical assistance, for either yourself or anyone on your stand, please notify, or ask any member of CTM staff for **Donna Morgan (CTM nurse)** who is the dedicated safety lead for this event.





HOSTED BY VALLEY
VETERANS (RCT)



Cwm Taf Morgannwg
ELUSEN GIGI NHS CHARITY



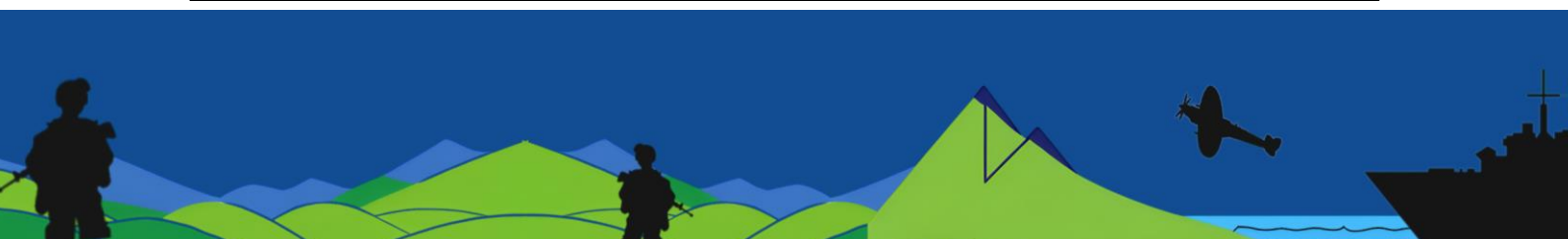
Bwrdd Iechyd Prifysgol
Cwm Taf
University Health Board

Key contacts for stall holders

Donna Morgan and Kelly Hallett will be your key marketplace leads throughout the event; they will show you to your allocated table and will be able to support with any queries. On the day of the event, please go straight into the marketplace and they will be on hand to support.

Full list of stall holders

Zone 1: Mental Health and Wellbeing
CTM NHS Veterans Wales
CTM Mind
CTM Mind Community Drug and Alcohol Team (CDAT)
NHS 111 "Press 2"
CTM Memory Service / Dementia Programme
Zone 2: Healthy Lifestyles
CTM's Nutrition and Dietetics
Admiral Nurse (RBL) Dementia
Smoking cessation support (Help Me Quit)
ARA (Gambling Support)
BAROD (Community Alcohol Support)
CTM Alcohol Support
Diabetes UK
Zone 3: Physical ailments / wellness
CTM Dental Health and Registration advice / Emergency Care
Community Pharmacy (Including Common Ailments Scheme)
Zone 4: Bereavement and Trauma
2Wish Cymru and 2Wish
Sandy Bear
CTM Advanced Care Planning
Eye to Eye Trauma Counselling
The National Advisory & Liaison Service (NALS) Cymru
Chaplaincy and Spiritual Care Department Cwm Taf Morgannwg University Health Board
65 Degrees North
CTM Carers' Support Service
CTM Patient Advisory Liaison Service (PALS)
Zone 5: Health Protection, Vaccination and Screening
Public Health Wales Screening Team





HOSTED BY VALLEY
VETERANS (RCT)



Bwrdd Iechyd Prifysgol
Cwm Taf
University Health Board

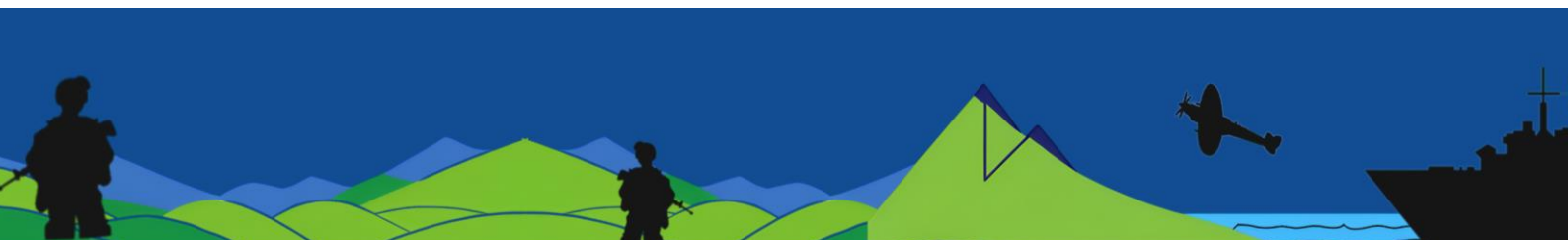
Coalfields Regeneration Trust
CTM Falls Prevention Community Service
CTM Tissues Viability Service
CTM Wellness Improvement Service (WISE)
CTM Health Protection Team
Zone 6: Community and Social Support
Rhondda Cynon Taf County Borough Council
Specialist Health Housing Outreach Service
HSBC – Digital Banking
Citizens Advice RCT
Care and Repair (including energy efficiency at home)
South Wales Fire & Rescue Home Service
Age Connects Morgannwg
South Wales Police Cyber Protection
Harvey Baker Solicitors
Trivallis
Voluntary Action Merthyr Tydfil (VAMT)
Interlink RCT
Bridgend Association of Voluntary Organisations (BAVO)
CTM NHS Charity Wales

Parking

Please be aware that the event is being held in a residential area. We kindly ask you to car share as far as possible to ensure smooth access to the venue for all attendees and supporters.

There are three designated car park zones:

Zone 1: Small area immediate outside the building (this is reserved parking for supporting accessibility ONLY).





HOSTED BY VALLEY VETERANS (RCT)



Cwm Taf Morgannwg
ELUSEN GIGINHS CHARITY



GIG
CYMRU
NHS
WALES

Bwrdd Iechyd Prifysgol
Cwm Taf
University Health Board



Zone 2: Top Field

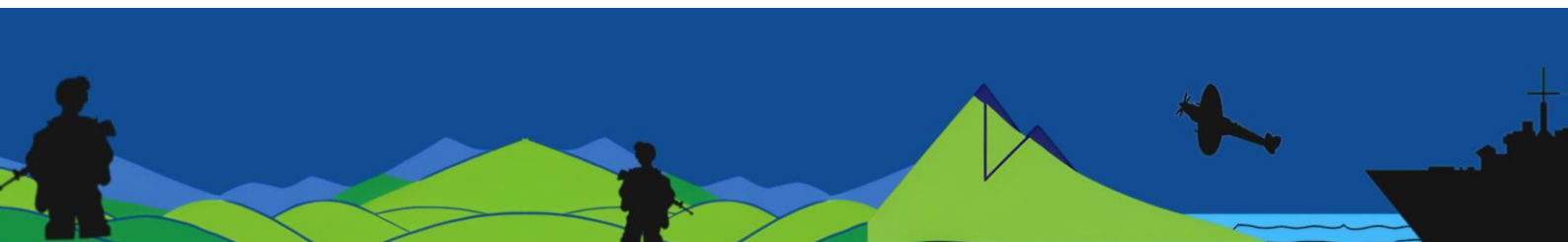
This area is allocated to all stall holders - and there will be volunteers on hand to direct and support you



Entrance to Zone 2

Zone 3: Residential Streets

There is plenty of parking along the nearby main roads and / or side streets (no permits).





HOSTED BY VALLEY
VETERANS (RCT)



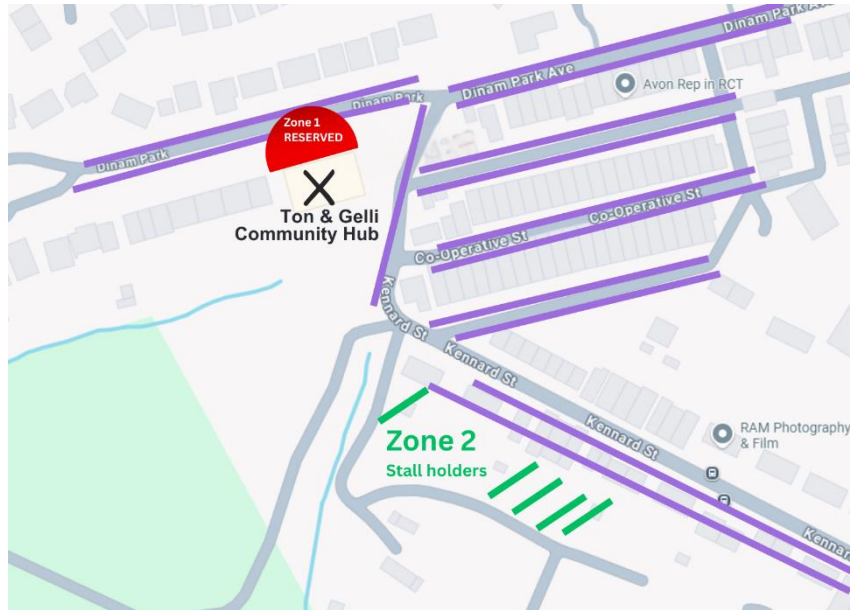
Cwm Taf Morgannwg
ELUSEN GIGINHS CHARITY



Bwrdd Iechyd Prifysgol
Cwm Taf
University Health Board

Please:

- Be mindful of where you are parking and NOT to block a drive entrance
- Do not double park – please ensure your parking does not restrict the clear access of any emergency vehicles.
- Be prepared to walk a little – this event is being located in a residential area so you may need to walk 5 mins to nearby parking.

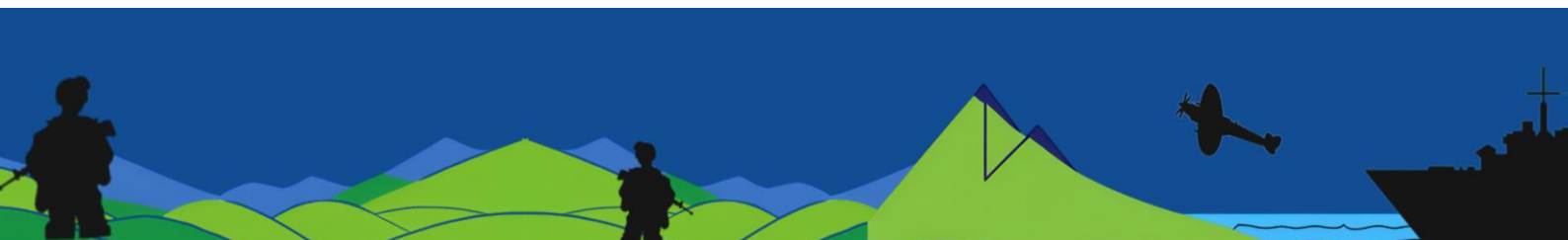


During the Event

We want everyone to enjoy the best event experience and your feedback of all parts of this event is importance to us. Stall holders are invited to fully participate in all aspects of the event programme. Seating capacity is going to be very limited but please use the outer edges of the room to listen to the presentations and talks, and please network with our CTM veterans, their families and the wider armed forces community during the coffee break. Plus remember to capture your feedback in our evaluation form.

Link to form: <https://forms.office.com/e/SnNp7ahFii>

Scan this QR code:





HOSTED BY VALLEY VETERANS (RCT)



Bwrdd Iechyd Prifysgol Cwm Taf University Health Board



3. Event Promotion and Social Media

- Please join CTM UHB’s online conversation using #CTMForcesHealth
- Please tag the health board and Valley Veterans on Facebook into any of your own posts.
- Please help us to cross-promote the event through reposts, images of your stand conversations and by tagging.
- Attached with this briefing is a generic graphic that you can use to promote your event attendance (see below).



Bwrdd Iechyd Prifysgol Cwm Taf Morgannwg University Health Board



In partnership with



Bwrdd Iechyd Prifysgol Cwm Taf Morgannwg University Health Board



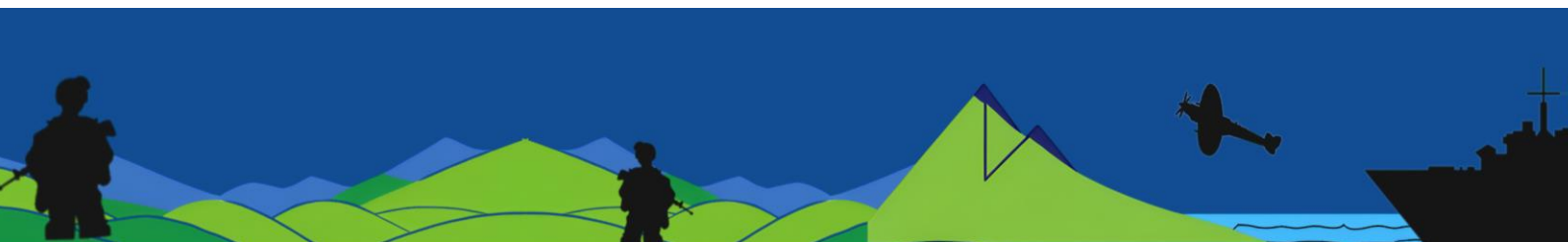
Mewn partneriaeth â



Follow these links to personalise your image

English version

https://www.canva.com/design/DAGpNX_6hgk/Fh5vITo_6qTfwewcwxnSKw/edit?utm_content=DAGpNX_6hgk&utm_campaign=designshare&utm_medium=link2&utm_source=sharebutton





HOSTED BY VALLEY
VETERANS (RCT)



Bwrdd Iechyd Prifysgol
Cwm Taf
University Health Board

Welsh version

https://www.canva.com/design/DAGpNRklceo/Ex9APnvZxESM7rqa5WvivA/edit?utm_content=DAGpNRklceo&utm_campaign=designshare&utm_medium=link2&utm_source=sharebutton

Digital Consent

Please ensure that you have consent to take and share pictures of people before sharing them. Digital forms (for signing) are on your stand or alternatively you can access an e- form [here](#). Please note that promotional photography will be taking place during the event.

4. Contact information and support

Main Hall



NATASHA WEEKS

Head of Engagement and event lead,
CTM UHB



DR LEE THOMAS

General Practitioner
CTMUHB



NIGEL LOCKE

Secretary
Valley Veterans



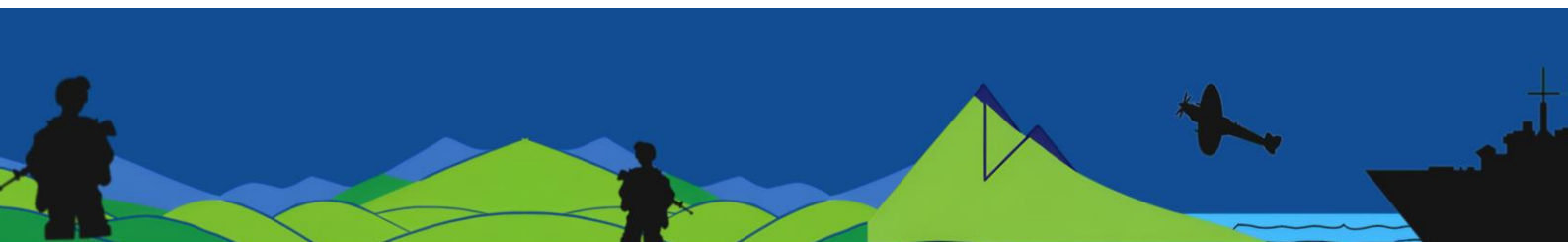
JENNY OLIVER

Head of Patient Experience,
CTM UHB



JOANNA DANIEL

Comms and Engagement Officer
CTM UHB





HOSTED BY VALLEY
VETERANS (RCT)



Bwrdd Iechyd Prifysgol
Cwm Taf
University Health Board

Marketplace



DONNA MORGAN

Bereavement Lead,
CTM UHB



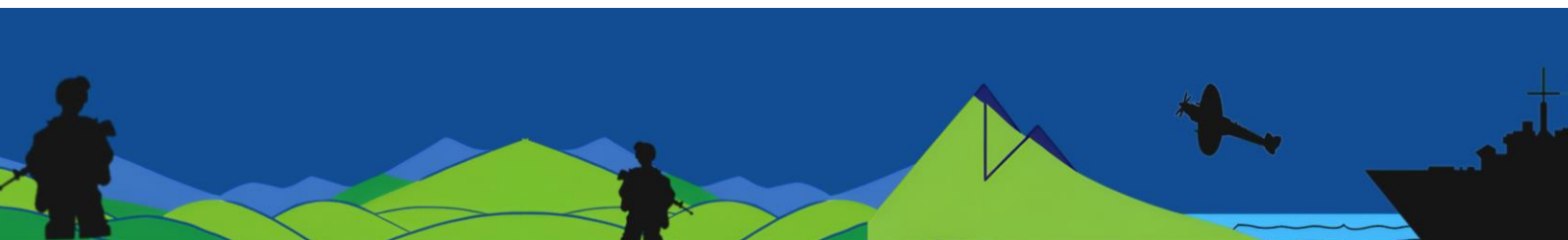
KELLY HALLETT

Project Officer,
CTM UHB

There will also be staff members on the registration desk if you need any support or assistance.

5. Other useful information

- Toilet facilities are available, including disabled facilities.
- There will be a room adjacent to the main hall available for private conversations should you require a quieter space.
- There will be plenty of wall space for you to use, and space for roller banners. Please use white tac if you are putting anything on the walls.
- Think about any printed materials you could bring for our attendees to take home with them.
- You will be on your feet for a few hours so wear comfortable shoes.
- Talking is also thirsty work 😊 so come with a full water bottle
- Network with each other- we have over 33 teams / organisations represented so a great opportunity to connect!
- Please ensure you leave your feedback and fill out this [evaluation form](#). Printed copies are also available on your tables.
- We recommend saving a copy of this briefing to your personal device, or bring a printed version with you for easy reference on the day.





**HOSTED BY VALLEY
VETERANS (RCT)**



Cwm Taf Morgannwg
ELUSEN GIGI NHS CHARITY

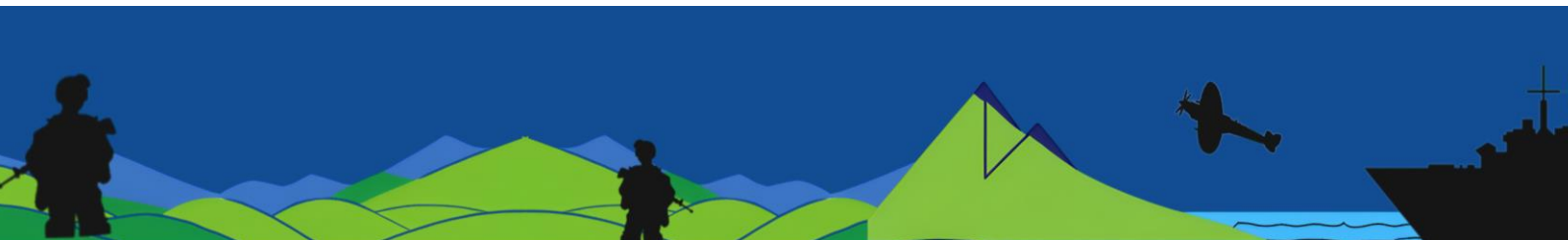


**GIG
CYMRU
NHS
WALES**

Bwrdd Iechyd Prifysgol
Cwm Taf
University Health Board

**Thank you for all your support.
Your feedback will be greatly appreciated.**

#CTMForcesHealth





HOSTED BY VALLEY
VETERANS (RCT)



GIG
CYMRU
NHS
WALES

Bwrdd Iechyd Prifysgol
Cwm Taf
University Health Board

Digwyddiad iechyd a lles cyn-filwyr a'r Lluoedd Arfog - Briff terfynol i stondinwyr

Mae'r briff manwl hwn i gefnogi eich presenoldeb yn ein digwyddiad cymunedol cyffrous i Gyn-filwyr a'r Lluoedd Arfog ddydd Iau 26 Mehefin 2025.

Os oes gennych unrhyw gwestiynau heb eu hateb, neu os oes angen rhagor o gymorth arnoch cyn y digwyddiad, cysylltwch â:

Natasha.Weeks2@wales.nhs.uk neu Kelly.Hallett@wales.nhs.uk.

Diolch ymlaen llaw am gefnogi'r diwrnod arbennig hwn i'n cymuned lluoedd arfog yng Nghwm Taf Morgannwg (CTM).

1. Trosolwg o'r Digwyddiad

Dyddiad: Dydd Iau 26 Mehefin 2025 (yn ystod Wythnos y Lluoedd Arfog)

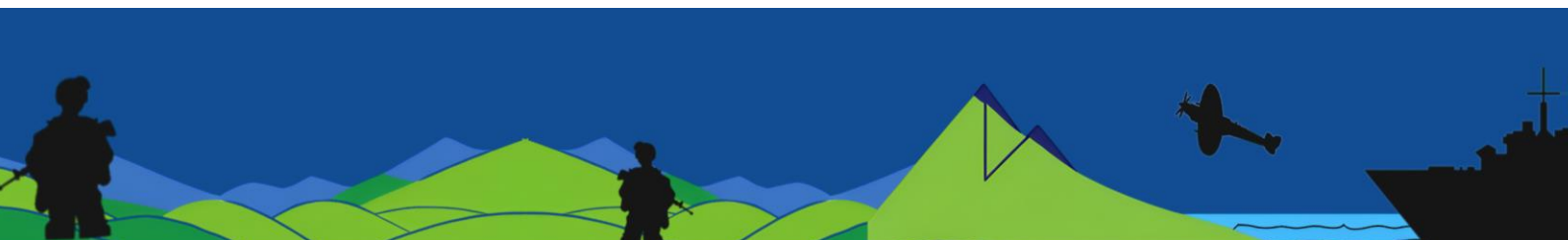
Amser: 9.30yb – 12.30yp

Cyfeiriad:

Wedi'i gynnal gan Valley Veterans
Canolfan Gymunedol Ton a Gelli
Parc Dinam,
Ton Pentre, CF41 7DX

Pwrpas y digwyddiad

Cydweithrediad cyntaf o'i fath sy'n ymroddedig i iechyd a lles Cyn-filwyr, eu teuluoedd a chymuned ehangach y Lluoedd Arfog yng Nghwm Taf Morgannwg. Mae'r digwyddiad nodedig hwn yn dod â gweithwyr proffesiynol byrddau iechyd ynghyd o ystod amrywiol o wasanaethau gyda meddygon teulu achrededig i Gyn-filwyr, awdurdodau lleol a phartneriaid trydydd sector, canolfannau cyn-filwyr a chymuned ehangach





HOSTED BY VALLEY
VETERANS (RCT)



GIG
CYMRU
NHS
WALES

Bwrdd Iechyd Prifysgol
Cwm Taf
University Health Board

y lluoedd arfog, i uno i gefnogi'r rhai sydd wedi gwasanaethu. Gyda siaradwyr arbenigol, stondinau gwybodaeth ryngweithiol ac adnoddau gwerthfawr, byddwn yn cydweithio i ddeall a gwella

anghenion iechyd a gofal cyn-filwyr, eu teuluoedd a chymuned ehangach y lluoedd arfog ar draws CTM.

Mae'r digwyddiad hwn yn cael ei gynnal yn ystod Wythnos y Lluoedd Arfog; gan roi cyfle i ddathlu ac anrhydeddu pob unigolyn sy'n byw yn ein rhanbarth ac sydd wedi gwasanaethu dros ein gwlad.

Cynulleidfa

Rydym yn disgwyl dros 150 o fynychwyr.

Agenda'r Digwyddiad

Wedi'i atodi gyda'r briff hwn.

2. Gwybodaeth i Standinwyr

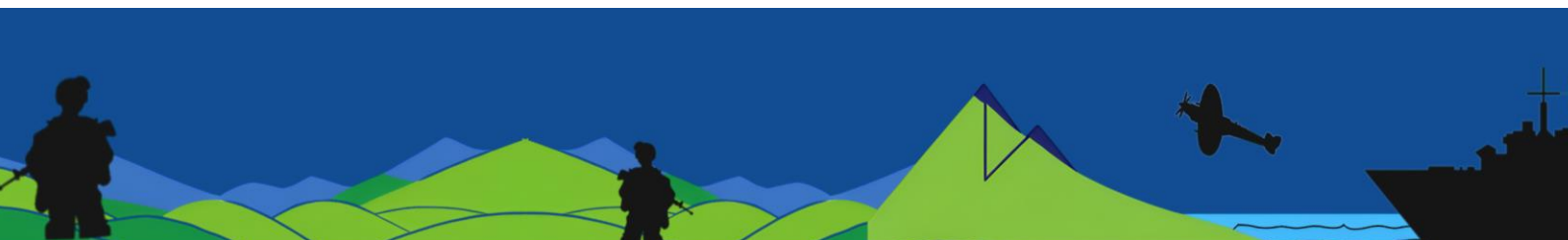
Gosod lan y Standin

Mae dwy neuadd yng Nghanolfan Gymunedol Valley Veterans, y ddwy wedi'u cysylltu â'i gilydd. Pan fyddwch chi'n mynd i mewn i'r prif adeilad, bydd tîm cofrestru'r digwyddiad yn eich cyfeirio at neuadd y farchnad.

Gofynnwn yn garedig i bob standinwr gosod ei standin yn Valley Veterans **ddydd Mercher, 25 Mehefin, unrhyw bryd rhwng 1:00pm – 5:00pm.** Os na allwch fynychu yn ystod yr amser hwn, neu os oes gennych unrhyw gwestiynau, cysylltwch â Kelly Hallett cyn gynted â phosibl yn Kelly.Hallett@wales.nhs.uk.

Gofynnwch am **Donna Morgan** neu **Kelly Hallett** wrth gyrraedd ar y ddau ddiwrnod.

Gwnewch yn siŵr bod eich standin yn barod ar gyfer busnes erbyn **9am ddydd Iau 26 Mehefin.**





HOSTED BY VALLEY
VETERANS (RCT)



Cwm Taf Morgannwg
ELUSEN GIGINHS CHARITY



GIG
CYMRU
NHS
WALES

Bwrdd Iechyd Prifysgol
Cwm Taf
University Health Board

Cau i Lawr

Byddwch yn barod am gyfnod prysur ar ddiwedd y digwyddiad felly rydym yn eich cynghori i drefnu eich amseroedd gadael ar amseroedd gwahanol i bobl er mwyn osgoi tagfeydd wrth adael y maes parcio (darperir manylion ble i barcio isod).

Cymorth Standin

Bydd gan bob standinwr fynediad i

- Gofod bwrdd ac arwyddion standin
- Lleiafswm o 1 gadair i bob bwrdd
- Mynediad at drydan - NI fydd gan y stondinau fynediad at socedi trydan ond bydd gorsaf wefru yn y neuadd - a fydd yn cael ei dangos i chi pan fyddwch chi'n cofrestru.
- Dŵr: Ni fydd gorsaf ddŵr yn y farchnad ond mae gan y lleoliad gegin gyda dŵr yfedadwy - dewch â photel ddŵr y gellir ei hail-lenwi gyda chi.
- WIFI - bydd y cod ar eich byrddau
- Ffurflen werthuso (copïau printiedig a chod QR yn cysylltu â'r fersiwn electronig).

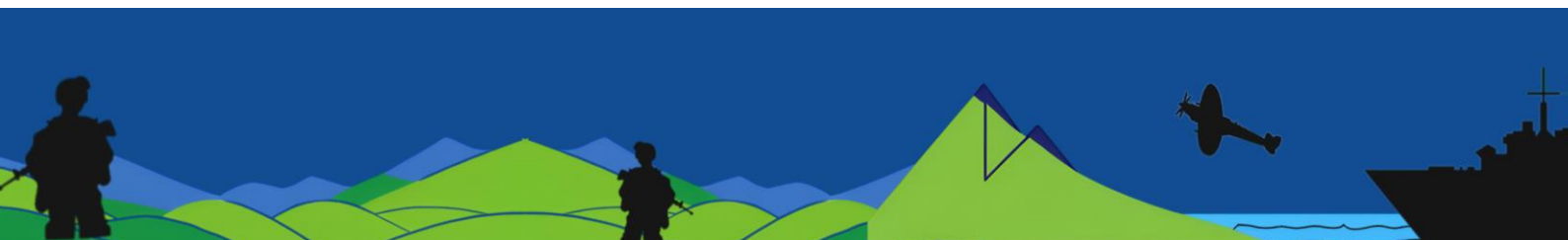
Cinio a Lluniaeth

Bydd wedi'i gynnwys i bawb. Bydd bwyd yn cael ei labelu gyda gwybodaeth ddeietegol lle bo modd. Fodd bynnag, rydym yn annog pob gwestai i aros yn ofalus a gwirio gyda'r staff a oes ganddynt unrhyw alergeddau neu ofynion dietegol penodol.

Diogelwch a chymorth cyntaf

Os bydd angen unrhyw gymorth meddygol arnoch, naill ai i chi'ch hun neu i unrhyw un ar eich standin, rhowch wybod i unrhyw aelod o staff CTM am **Donna Morgan (nyrs CTM)** sef yr arweinydd diogelwch pwrpasol ar gyfer y digwyddiad hwn, neu gofynnwch i unrhyw aelod o staff CTM.

Cysylltiadau Allweddol ar gyfer Standinwyr





HOSTED BY VALLEY
VETERANS (RCT)



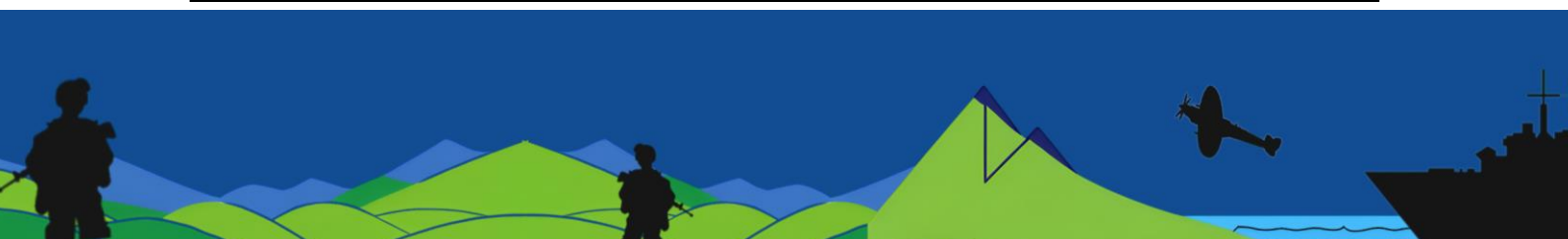
GIG
CYMRU
NHS
WALES

Bwrdd Iechyd Prifysgol
Cwm Taf
University Health Board

Donna Morgan a Kelly Hallett fydd eich arweinwyr marchnad allweddol drwy gydol y digwyddiad; byddant yn eich tywys i'ch bwrdd a byddant yn gallu eich cynorthwyo gydag unrhyw ymholiadau. Ar ddiwrnod y digwyddiad, ewch yn syth i'r farchnad a byddant wrth law i gefnogi.

Rhestr lawn o stondinwyr

Ardal 1: Iechyd meddwl a lles
GIG Cymru i Gyn-filwyr CTM
Mind CTM
Tîm Cyffuriau ac Alcohol Cymunedol Mind CTM (CDAT)
GIG 111 "Pwyso 2"
Gwasanaeth Cof / Rhaglen Dementia CTM
Ardal 2: Ffyrdd iach o fyw
Maeth a Dieteteg CTM
Nyrs Admiral (RBL) Dementia
Cymorth rhoi'r gorau i ysmegu (Helpa Fi i Stopio)
ARA (Cefnogaeth Gamblo)
BAROD (Cefnogaeth Alcohol Cymunedol)
Cymorth Alcohol CTM
Diabetes UK
Ardal 3: Anhwylderau corfforol / lles
Cyngor Iechyd Deintyddol a Chofrestru / Gofal Brys CTM
Fferyllfa Gymunedol (Gan gynnwys Cynllun Mân Anhwylderau)
Ardal 4: Profedigaeth a Thrawma
2Wish Cymru a 2Wish
Sandy Bear
Cynllunio Gofal Ymlaen Llaw CTM
Cwnsela Trawma Llygad yn Llygad
Gwasanaeth Cyngori a Chysylltu Cenedlaethol (NALS) Cymru
Adran Caplaniaeth a Gofal Ysbrydol Bwrdd Iechyd Prifysgol Cwm Taf Morgannwg
65 Degrees North
Gwasanaeth Cymorth i Ofalwyr CTM
Y Gwasanaeth Cymorth a Chyswllt Cleifion (PALS) CTM
Ardal 5: Diogelu Iechyd, Brechu a Sgrinio
Tîm Sgrinio Iechyd Cyhoeddus Cymru
Ymddiriedolaeth Adfywio'r Meysydd Glo
Gwasanaeth Cymunedol Atal Cwmpadau CTM





HOSTED BY VALLEY
VETERANS (RCT)



Bwrdd Iechyd Prifysgol
Cwm Taf
University Health Board

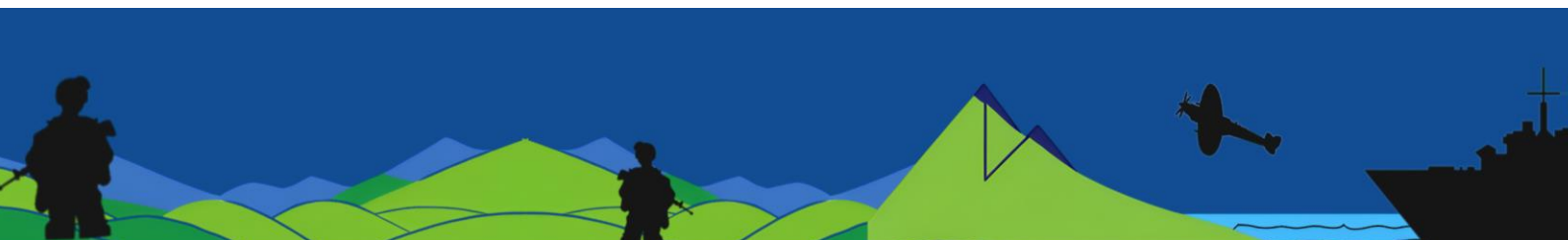
Gwasanaeth Hyfywedd Meinweoedd CTM
Gwasanaeth Gwella Lles CTM (WISE)
Tîm Diogelu Iechyd CTM
Ardal 6: Cefnogaeth Gymunedol a Chymdeithasol
Cyngor Bwrdeistref Sirol Rhondda Cynon Taf
Gwasanaeth Allgymorth Tai Iechyd Arbenigol
HSBC – Bancio Digidol
Cyngor ar Bopeth RhCT
Gofal a Thrwsio (gan gynnwys effeithlonrwydd ynni gartref)
Gwasanaeth Tân ac Achub Cartref De Cymru
Age Connects Morgannwg
Seiberddiogelwch Heddlu De Cymru
Harvey Baker Solicitors
Trivallis
Gweithredu Gwirfoddol Merthyr Tudful (VAMT)
Interlink RhCT
Cymdeithas Mudiadau Gwirfoddol Pen-y-bont ar Ogwr (BAVO)
Elusen GIG Cymru CTM

Parcio

Byddwch yn ymwybodol bod y digwyddiad yn cael ei gynnal mewn ardal breswyl. Gofynnwn yn garedig i chi rannu ceir cyn belled ag y bo modd er mwyn sicrhau mynediad llyfn i'r lleoliad i'r holl fynychwyr a chefnogwyr.

Mae tri maes parcio ceir dynodedig:

Ardal 1: Ardal fach yn union y tu allan i'r adeilad (mae hwn yn barcio wedi'i gadw ar gyfer cefnogi hygyrchedd YN UNIG).





HOSTED BY VALLEY
VETERANS (RCT)



Cwm Taf Morgannwg
ELUSEN GIGINHS CHARITY



GIG
CYMRU
NHS
WALES

Bwrdd Iechyd Prifysgol
Cwm Taf
University Health Board



Ardal 2: Maes Uchaf

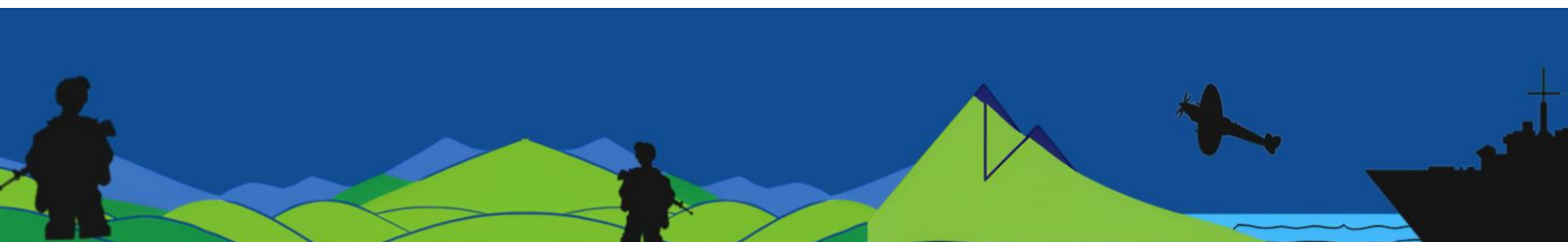
Mae'r ardal hon wedi'i dyrannu i bob stondinwr - a bydd gwirfoddolwyr wrth law i'ch cyfeirio a'ch cefnogi



I ynnediad i Ardal 2

Ardal 3: Strydoedd Preswyl

Mae digon o le parcio ar hyd y prif ffyrdd a/neu'r strydoedd ochr cyfagos (dim trwyddedau).





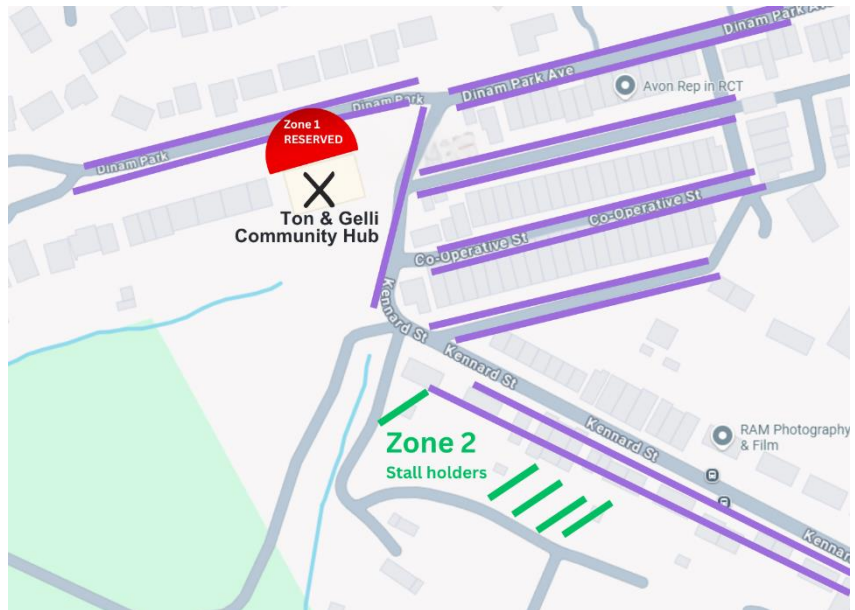
HOSTED BY VALLEY
VETERANS (RCT)



Bwrdd Iechyd Prifysgol
Cwm Taf
University Health Board

Sylwch:

- Byddwch yn ofalus o ble rydych chi'n parcio a PHEIDWCH â rhwystro mynedfeydd cartref
- Peidiwch â pharcio wrth ymyl car sydd eisoes wedi'i barcio ar ochr y ffordd. Sicrhewch nad yw eich parcio yn cyfyngu ar fynediad clir unrhyw gerbydau brys.
- Byddwch yn barod i gerdded ychydig – mae'r digwyddiad hwn yn cael ei gynnal mewn ardal breswyl felly efallai y bydd angen i chi gerdded 5 munud i barcio gerllaw.

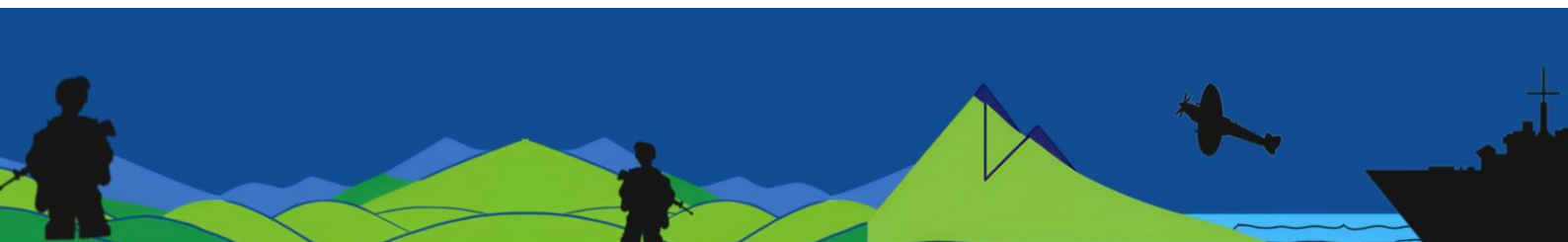


Yn ystod y Digwyddiad

Rydym eisiau i bawb fwynhau'r profiad digwyddiad gorau ac mae eich adborth ar bob rhan o'r digwyddiad hwn yn bwysig i ni. Rydyn ni'n gwahodd stondinwyr i gymryd rhan lawn ym mhob agwedd ar raglen y digwyddiad. Bydd nifer y seddi yn gyfyngedig iawn ond defnyddiwch ymylon allanol yr ystafell i wrando ar y cyflwyniadau a'r sgysiau, a rhwydweithio gyda chyn-filwyr CTM, eu teuluoedd a chymuned ehangach y lluoedd arfog yn ystod yr egwyl goffi. Hefyd, cofiwch gofnodi eich adborth yn ein ffurflen werthuso.

Cyswllt â'r ffurflen: <https://forms.office.com/e/a2su7Bz7YK>

Scania'r cod QR hwn:





HOSTED BY VALLEY VETERANS (RCT)



Bwrdd Iechyd Prifysgol Cwm Taf University Health Board



3. Hyrwyddo Digwyddiadau a Chyfryngau Cymdeithasol

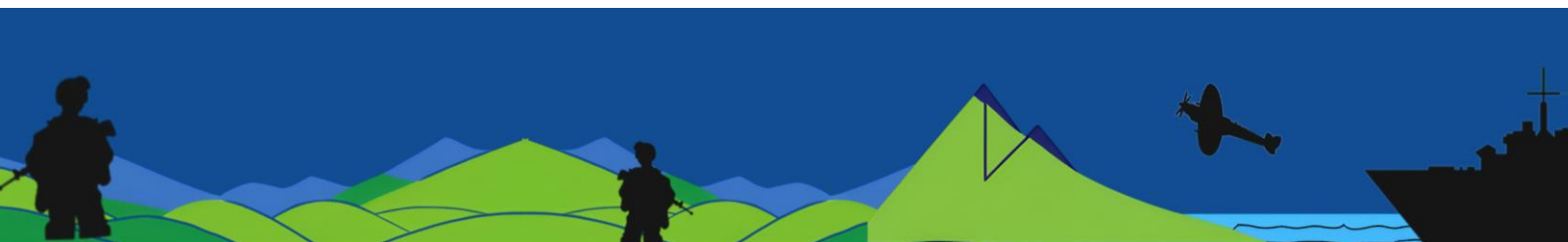
- Ymunwch â sgwrs ar-lein BIP CTM gan ddefnyddio #IechydLluoeddArfogCTM
- Tagiwch y bwrdd iechyd a Valley Veterans ar Facebook yn unrhyw un o'ch postiadau eich hun.
- Helpwch ni i hyrwyddo'r digwyddiad drwy ail-bostio, lluniau o'ch sgysrsiau ar y stondin a thrwy dagio.
- Mae graffig generig y gallwch ei ddefnyddio i hyrwyddo eich presenoldeb yn y digwyddiad (gweler isod).



Dilynwch y dolenni hyn i bersonoli eich llun

Fersiwn Saesneg

https://www.canva.com/design/DAGpNX_6hgk/Fh5vITo_6qTfwewcwxnSK





HOSTED BY VALLEY
VETERANS (RCT)



Bwrdd Iechyd Prifysgol
Cwm Taf
University Health Board

[w/edit?utm_content=DAGpNX_6hgk&utm_campaign=designshare&utm_medium=link2&utm_source=sharebutton](https://www.canva.com/design/DAGpNX_6hgk&utm_campaign=designshare&utm_medium=link2&utm_source=sharebutton)

Fersiwn Gymraeg

https://www.canva.com/design/DAGpNRklceo/Ex9APnvZxESM7rqa5WvivA/edit?utm_content=DAGpNRklceo&utm_campaign=designshare&utm_medium=link2&utm_source=sharebutton

Caniatâd Digidol

Gwnewch yn siŵr bod gennych ganiatâd i dynnu lluniau a'u rhannu o bobl cyn eu rhannu. Mae ffurflenni digidol (ar gyfer llofnodi) ar eich stondin neu fel arall gallwch gael mynediad at e-ffurflen [yma.](https://www.yma.gov.uk/) Noder y bydd ffotograffiaeth hyrwyddo yn cael ei chynnal yn ystod y digwyddiad.

4. Rhagor o wybodaeth a chymorth

Prif Neuadd



NATASHA WEEKS

Head of Engagement and event lead,
CTM UHB



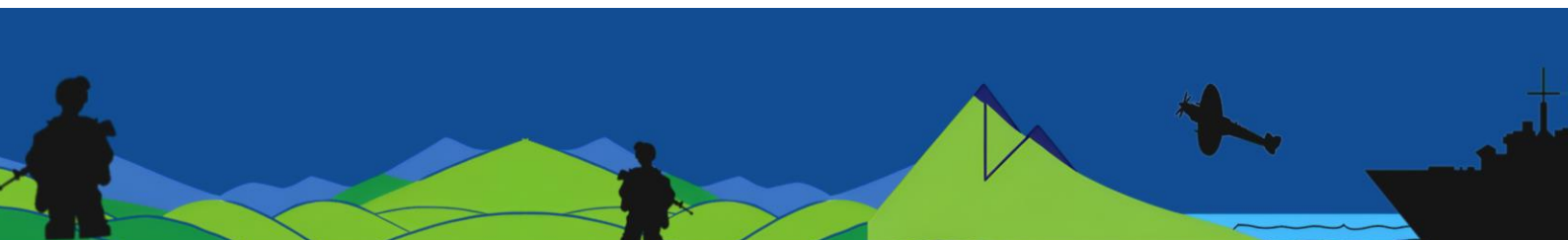
DR LEE THOMAS

General Practitioner
CTMUHB



NIGEL LOCKE

Secretary
Valley Veterans





HOSTED BY VALLEY
VETERANS (RCT)



Bwrdd Iechyd Prifysgol
Cwm Taf
University Health Board



JENNY OLIVER

-Head of Patient Experience,
CTM UHB



JOANNA DANIEL

-Comms and Engagement Officer
CTM UHB

Marchnad



DONNA MORGAN

-Bereavement Lead,
CTM UHB



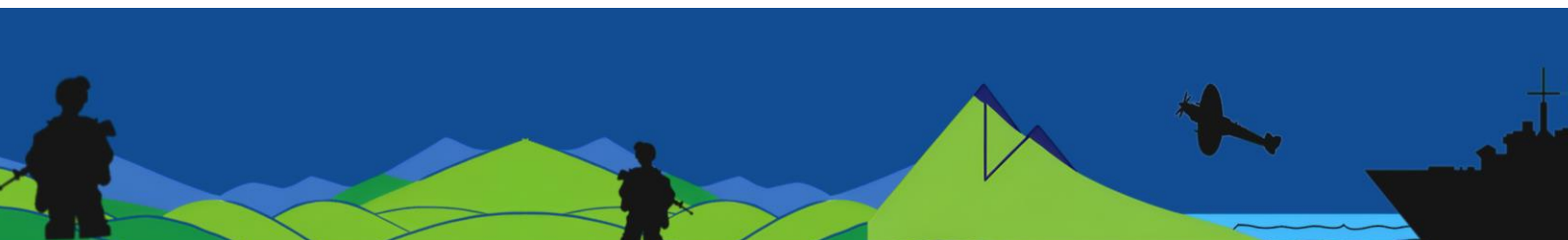
KELLY HALLETT

-Project Officer,
CTM UHB

Bydd aelodau staff wrth y ddesg gofrestru hefyd os oes angen unrhyw gefnogaeth neu gymorth arnoch.

5. Gwybodaeth ddefnyddiol arall

- Mae cyfleusterau toiled ar gael, gan gynnwys cyfleusterau i bobl anabl.
- Bydd ystafell wrth ymyl y brif neuadd ar gael ar gyfer sgysiau preifat os bydd angen lle tawelach arnoch.
- Bydd digon o le ar y wal i chi ei ddefnyddio, a lle ar gyfer baneri rholio. Defnyddiwch dac gwyn os ydych chi'n rhoi unrhyw beth ar y waliau.





HOSTED BY VALLEY
VETERANS (RCT)



Cwm Taf Morgannwg
ELUSEN GIGINHS CHARITY



GIG
CYMRU
NHS
WALES

Bwrdd Iechyd Prifysgol
Cwm Taf
University Health Board

- Meddyliwch am unrhyw ddeunyddiau printiedig y gallech chi ddod â nhw i'n mynychwyr eu cymryd adref gyda nhw.
- Byddwch ar eich traed am ychydig oriau felly gwisgwch esgidiau cyfforddus.
- Mae siarad hefyd yn waith sychedig ☺ felly dewch â photel ddŵr lawn gyda chi
- Rhwydweithiwch gyda'ch gilydd - mae gennym dros 33 o dimau / sefydliadau wedi'u cynrychioli felly cyfle gwych i gysylltu!
- Gwnewch yn siŵr eich bod yn gadael eich adborth ac yn llenwi'r [ffurflen werthuso](#) hon. Mae copïau printiedig hefyd ar gael ar eich byrddau.
- Rydym yn argymhell cadw copi o'r briff hwn ar eich dyfais bersonol, neu ddod â fersiwn brintiedig gyda chi i gyfeirio ato'n hawdd ar y diwrnod.

Diolch am eich holl gefnogaeth.

Bydd eich adborth yn cael ei werthfawrogi'n fawr.

#IechydLluoeddArfogCTM

