



**AGENDA ITEM**

6.1.1

**POPULATION HEALTH & PARTNERSHIPS COMMITTEE**

Cwm Taf Morgannwg Regional Integration Fund  
Outcomes and Performance Framework

<b>Date of meeting</b>	26 <sup>th</sup> July 2022
<b>FOI Status</b>	Open/Public
<b>If closed please indicate reason</b>	Not Applicable - Public Report
<b>Prepared by</b>	Sarah Mills, Head of Regional Commissioning Unit
<b>Presented by</b>	Linda Prosser, Executive Director of Strategy and Transformation
<b>Approving Executive Sponsor</b>	Executive Director of Strategy and Transformation
<b>Report purpose</b>	FOR NOTING

**Engagement (internal/external) undertaken to date (including receipt/consideration at Committee/group)**

<b>Committee/Group/Individuals</b>	<b>Date</b>	<b>Outcome</b>
		Choose an item.

**ACRONYMS**

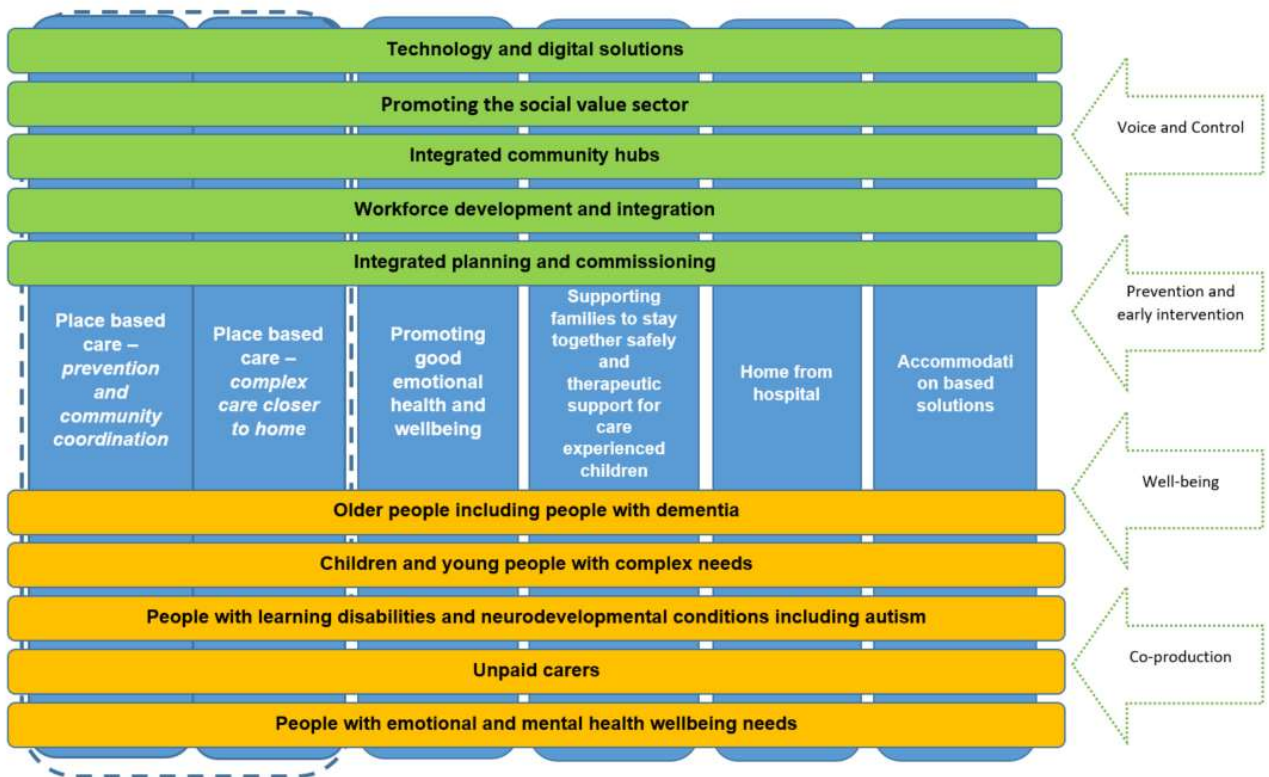
CTM	Cwm Taf Morgannwg
RPB	Regional Partnership Board
RIF	Regional Integration Fund



# 1. SITUATION/BACKGROUND

- 1.1 Following the commencement of the new RIF on the 1st April 2022, there was a requirement to introduce an outcomes and performance framework across all commissioned services.
- 1.2 The new framework would ensure all services contributed towards the principles of the national guidance and provide a consistent suite of measures and indicators that supported the new models of care.
- 1.3 Regional Integration Fund – Models of Care

Thematic priorities, enablers and population groups



- 1.3 The Framework is a collection of outcomes, indicators and measures brought together into a single, useable structure to improve the planning, development and monitoring of programmes funded from the Regional Integration Fund.
- 1.4 The Framework adopts a Results Based Accountability methodology and is structured around a single overarching outcome spanning the population of Cwm Taf Morgannwg. This formal structure provides a consistent direction for all services and projects to identify their contribution at relevant levels.
- 1.5 This structure is intended to ensure consistency in reporting which should enable the collective performance of the programmes to be collected, analysed and the full (combined) impact realised.
- 1.6 This framework is intended to replace existing local frameworks from previous grants and provide a single structure for all services to be commissioned, monitored and evaluated.
- 1.7 In essence this new Framework provides opportunities for multiple projects, programmes and providers to consider collaboratively what needs to change in order to realise the greatest impact for our most in need children, young people, adults, older people and their communities and how they can complement each other to achieve this.
- 1.8 Outcomes, indicators and measures within the Framework will not be applicable to all services however will clearly show a clear picture of the scope that programmes align their work to.



### 1.10 The primary aims of the Framework are

- To identify and articulate the change we want to see, describe what success will look like and by doing so drive the actions of those involved.
- To support local commissioners and providers to adopt ways of working which optimise the combined impact of programme commissioned from the Regional Integration Fund.
- To support the delivery of an outcomes focused programme of delivery, ensuring interventions are complementary and by doing so sustaining their success.

1.11 Reporting requirements. All services received a performance meeting and a new reporting template prior to the end of quarter one. Formal performance reporting is required every 6 months, though projects have been asked to submit a test report for the first quarter. The first formal reports are due October 2022.

1.12 Although no measuring tools have been prescribed during the introduction of the framework, services have been asked to review current mechanisms to ensure they provide sufficient evidence of outcomes being reported.

1.13 In addition to the performance reports, all services are required to complete and submit case studies and an end of year evaluation. These will be used to enhance the performance information and provide a holistic view of the impact achieved.

## **2. KEY RISKS/MATTERS FOR ESCALATION TO BOARD/COMMITTEE**

2.1 Note the completed Framework.

2.2 Note the requirement to introduce standardised measures across all services commissioned through RIF.

2.3 Note the requirements and timescale for completing performance reports.



### 3. IMPACT ASSESSMENT

<b>Quality/Safety/Patient Experience implications</b>	There are no specific quality and safety implications related to the activity outlined in this report.
<b>Related Health and Care standard(s)</b>	Governance, Leadership and Accountability
<b>Equality Impact Assessment (EIA) completed - Please note EIAs are required for <u>all</u> new, changed or withdrawn policies and services.</b>	No (Include further detail below)
	No direct service or policy change.
<b>Legal implications / impact</b>	There are no specific legal implications related to the activity outlined in this report.
<b>Resource (Capital/Revenue £/Workforce) implications / Impact</b>	There is no direct impact on resources as a result of the activity outlined in this report.
<b>Link to Strategic Goals</b>	Sustaining our Future

### 4. RECOMMENDATION

- 4.1 The Committee is asked to **NOTE** the Outcomes and Performance Framework.