



AGENDA ITEM

5.2

CTM BOARD

COVID VACCINATION CAMPAIGN UPDATE

Date of meeting	28/01/2021
FOI Status	Open/Public
If closed please indicate reason	Not Applicable - Public Report
Prepared by	Julie Keegan, Assistant Director of Planning
Presented by	Clare Williams, Interim Director of Planning and Performance
Approving Executive Sponsor	Executive Director of Public Health
Report purpose	FOR APPROVAL

Engagement (internal/external) undertaken to date (including receipt/consideration at Committee/group)

Committee/Group/Individuals	Date	Outcome
Management Board	27/01/2021	

ACRONYMS

MRHA	Medicines and Healthcare Products Regulatory Agency
AZ	Astra Zeneca Covid-19 Vaccine
JCVI	Joint Committee for Vaccination and Immunisation
WIS	Welsh Immunisation System
NWIS	NHS Wales Informatics Service

1. SITUATION/BACKGROUND

- 1.1 The purpose of this report is to update the Health Board on its Strategic and Operational plan for its COVID-19 Vaccination Programme.
- 1.2 The Chief Medical Officer in his letter dated 13 August 2020 required Health Boards with their regional Test-Trace-Protect Programmes to have a COVID-19 mass vaccination plan in place ready for delivery from early October 2020, with a preliminary draft plan to be submitted to the Welsh Government by 3 September 2020.
- 1.3 Cwm Taf Morgannwg completed and submitted their preliminary plan to Welsh Government, submitting to the Board for approval in September 2020.
- 1.4 Following the MRHA (the Medicines and Healthcare Products Regulatory Agency) approval of 3 safe and effective COVID-19 vaccines:
 - Pfizer BioNTech (Pfizer)
 - Oxford/Astra Zeneca/Oxford (Oxford) and
 - Moderna

Cwm Taf Morgannwg UHB commenced its vaccination programme on 7 December 2020, in line with the JCVI (Joint Committee for Vaccination and Immunisation) guidance on the national priority groups to be prioritised for vaccination first.

- 1.5 As the guidance around the use of these vaccines has been issued and the Welsh Governments strategy has emerged, Cwm Taf Morgannwg UHB has revised its strategy and plan for the delivery of mass vaccination.

2. SPECIFIC MATTERS FOR CONSIDERATION BY THIS MEETING (ASSESSMENT)

Welsh Government Strategic Context

- 2.1 On 11 January 2021, Welsh Government issued its [Vaccination Strategy for Wales](#). This strategy set out its expectations for the delivery of its vaccination programme across Wales.
- 2.2 The strategy sets out the priority groups of the population to be prioritised for vaccine in line with the JCVI advice issued on 2 December 2020. This includes 9 prioritised groups as follows:



Priority Group	
1	Residents and staff in care homes for older people
2	All those 80 years and over Frontline Health and Social care Workers
3	All those 75 and over
4	All those 70 years and over and Extremely Vulnerable Individuals
5	All those 65 years and over
6	All individuals 16 to 64 with underlying health conditions which put them at higher risk
7	All those 60 years and over
8	All those 55 years and over
9	All those 50 years and over

- 2.3 The Welsh Government Strategy has split this list into two cohorts/phases, with timelines when they expect patients in these groups to have had their first vaccination after changing its guidance on the interval between the first and second vaccination. The original assumption was that the interval would be 28 days, but in January 2021, this guidance changed to an interval of up to 12 weeks apart, in order to get a wider group of people vaccinated in light of current COVID-19 levels and the expected high level of protection attained from the first vaccine. The exception to this guidance is staff and residents in care homes where the interval is 8 weeks.
- 2.4 Phase/Milestone 1 – Priority Groups 1 to 4. Target mid-February 2021. The aim is to, subject to supply, offer vaccination to all care home residents and staff, frontline health and social care staff, those 70 and over and clinically extremely vulnerable individuals. Within this phase, there are two further targets:
- All Welsh Ambulance staff to be vaccinated by 18th January 2021.
 - All care home staff and residents by the end of January 2021
- 2.5 Phase/Milestone 2 – Priority Groups 5 – 9. Again, subject to vaccine supply, which becomes more uncertain further into the future, the aim is to offer vaccinations to all those 50 years and above as well as those who are clinically vulnerable. The aim is to complete this phase by Spring 2021.
- 2.6 Welsh Government has estimated those vaccinated in priority groups 1 to 9 represents 99% of preventable mortality from COVID-19.

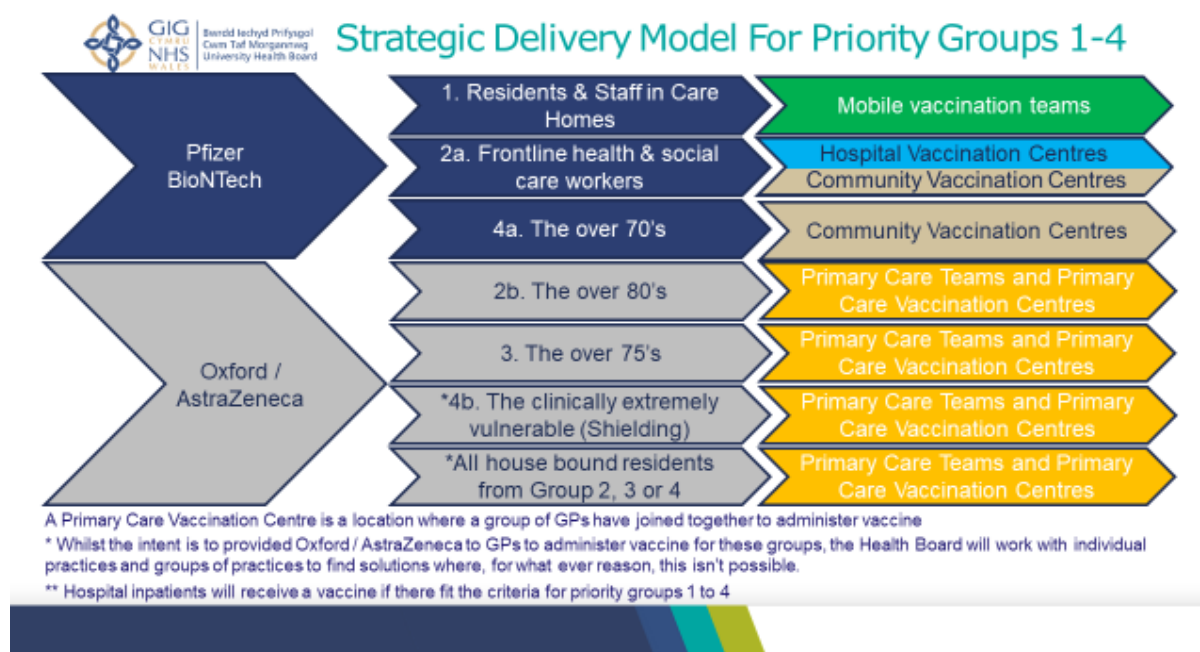
- 2.7 Phase 3/Milestone 3. Welsh Governments ambition is to vaccinate the rest of the eligible adult population by Autumn 2021 in line with further guidance from JCVI on how the population should be prioritised for vaccination. The Welsh Government has stressed that the supply this far out is uncertain and will require further planning and guidance once the supply of vaccine and the further JCVI guidance is published.

Cwm Taf Morgannwg UHB Strategy

- 2.8 The aim of the Cwm Taf Vaccination programme is to:
- Develop and offer a COVID-19 vaccination programme to all eligible and consenting residents and health and care sector workers in Cwm Taf Morgannwg;
 - Reduce the inequality in preventable disease distribution in Cwm Taf Morgannwg by increasing uptake of vaccinations in areas of deprivation and vulnerable populations; and
 - To design a COVID19 vaccination programme where capacity to deliver is directly aligned to vaccination supply.
- 2.9 CTMUHB will follow the JCVI Guidelines on vaccinating in priority order of groups 1 through to 9 and allow an 11 week interval between the first and 2nd dose, as per current Welsh Government guidance.
- 2.10 The interval between 1st and 2nd dose in Care Homes will be 8 weeks (for the 3 care homes vaccinated over Christmas, we will be honouring the 4 week interval period) again as per Welsh Government guidance.
- 2.11 The Oxford/ AstraZeneca vaccine will primarily be targeted for use in Primary Care because of the logistics of distributing to a large number of practices. However, a small amount of the vaccine will be used for frontline health and social care workers and care home residents who can't receive the Pfizer vaccine for clinical reason.
- 2.12 The Pfizer vaccine to be targeted in all other settings including care homes.
- 2.13 There is no plan to mix vaccines between doses and only one vaccine type will be used in a single location for clinical safety.
- 2.14 We will be using the mandated national Welsh Immunisation System (WIS) to record all vaccines given as well as using it to generate invitation letters. It will also allow us to extract good performance data to understand uptake of the vaccine etc.

Cwm Taf Morgannwg UHB Strategic Delivery Model

- 2.15 Vaccine supply since the beginning of the vaccination campaign has been unpredictable and as a result it has been difficult to plan. The Pfizer vaccine has been available in a greater quantity than the Oxford/AstraZeneca Vaccine and so the plan for the priority groups 1 to 4 has taken this into account to ensure we have enough of each vaccine to be allocated to each group.
- 2.16 The plan is to allocate the two vaccines we will be using (Moderna Vaccine although approved is currently not available) between the groups as follows:



Cwm Taf Morgannwg UHB Operational Delivery Plan –Phase 1

- 2.17 There are circa 100k people to vaccinate in priority groups 1 to 4. Whilst the control total of the Phase 1 Group is c110k, we do not expect everyone to take up the vaccine either for medical or choice reasons. The total numbers in the Priority Groups 1 to 4 are:



Priority Group		Numbers
1	Residents and staff in care homes for older people	5,615
2a	Frontline Health and Social Care Workers	28,736
2b	All those 80 years and over	21,549
3	All those 75 and over	17,976
4a	All those 70 years and over and	25,170
4b	Extremely Vulnerable Adults (Shielding)	11,278
	TOTAL	110,324

2.18 To ensure everyone in care homes are vaccinated by the end of January, all care homes for those over 65 will be visited using a mobile vaccine team and using the Pfizer vaccine. The team have scheduled to visit all homes prior to the end of January, recognising that some residents will be unable to be vaccinated at the time if they are medically unfit. However, there will be an ongoing programme to revisit and vaccinate when people are medically fit.

2.19 The Hospital Vaccination Sites will predominately be used for vaccinating frontline health care staff and will be using the Pfizer vaccine.

2.20 To ensure everyone in priority groups 1-4 are vaccinated by 14 February, Community Vaccination Centres are essential to create the capacity required. CTM will be incrementally increasing the number of community vaccination centres over the Phase 1 period as follows:

Ty Trevithick, Abercynon	4 January 2021
Ravens Court, Bridgend	4 January 2021
Rhydyccar Leisure Centre, Merthyr	11 January 2021
Rhondda Leisure Centre, Ystrad	18 January 2021

2.21 All 51 GP Practices in CTM have agreed to engage in vaccinating and will be using the majority of the currently limited amount of Oxford/AstraZeneca vaccine we will have available to us up until 14 February. A very small amount will be reserved for those who are unable to have the Pfizer for clinical reasons. The allocation of the available vaccine will be allocated proportionality on a weekly basis in proportion to the numbers a particular practice will have to vaccinate in each priority group.

2.22 Welsh Government have indicated that they will be in a position to supply sufficient vaccine to meet the requirements of the plan. This

will be provided through a vaccine split of approximately 50/50, Pfizer, Oxford/AstraZeneca.

- 2.23 Applying the most recent Welsh Government supply schedules to the Strategic Delivery Model, indicates we will achieve the following timelines for each priority group:

Priority Group		Date
1	Residents and staff in care homes for older people	31.1.21
2a	Frontline Health and Social Care Workers	31.1.21
2b	All those 80 years and over	31.1.21
3	All those 75 and over	7.2.21
4a	All those 70 years and over and	14.2.21
4b	Extremely Vulnerable Adults (Shielding)	14.2.21

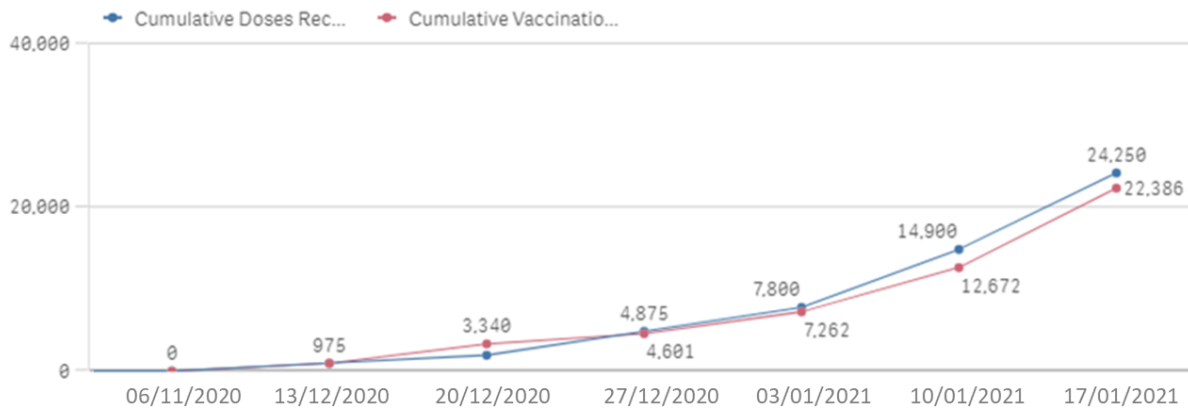
- 2.24 The major risk to this is the large volume of Oxford/AstraZeneca Vaccine due the 8 February, c19k doses, which whilst in our plan as being expected it has not been confirmed and so poses a risk and could destabilise our plan of achieving vaccinating all in priority groups 1-4 by 14 February.
- 2.25 The plan to utilise c110 doses of vaccine by 14 February is an ambitious plan and requires a significant workforce resource, not just vaccinators, but administrators, pharmacy and logistics to move the vaccine. A significant amount of work has gone into this plan to achieve the milestone targets set.

Vaccination Activity

- 2.26 All vaccination activity is recorded in WIS. The following has being recorded up to and including 17 January 2021 – the most recent complete week.



Cumulative Vaccinations Received vs Given by Week



- 2.27 Data recorded in multiple locations to date would suggest a shortfall against the vaccination doses made available of 1,864. This is believed to be down to a backlog in data entry in both Merthyr Cynon ILG and in Primary Care settings.
- 2.28 In the case of Merthyr Cynon, steps have been taken to ensure clinics are completed in full using the Welsh Immunisation System (WIS) in real time. The ILG is working with the Performance & Information Directorate to resolve the backlog, largely from their first two vaccination tray deliveries, believed to be of the order of 430.
- 2.29 The updating of WIS in Primary Care settings is more challenging, given the need to record information in their own clinical system as well as updating WIS. Discussions are being held to offer further support to ensure that WIS is updated as near to 'real time' as possible.
- 2.30 All locations are aiming towards the operational standard of clinics being completed and updated on WIS within 24 hours.

Vaccination Plan for Phase 2 Priority Groups 5 to 9

- 2.31 Planning for Phase 2 is underway but its scope is limited by the fact we have not been supplied with a schedule of the vaccination we should plan to receive. Planning is focusing in clarifying the patients to be included in Phase 2. Once complete, we will be planning on the number of doses we will require and how we would expect to distribute through our community vaccination centres, hospital sites and primary care. Once this work is completed, it will be brought back to the Board.

Financial Cost

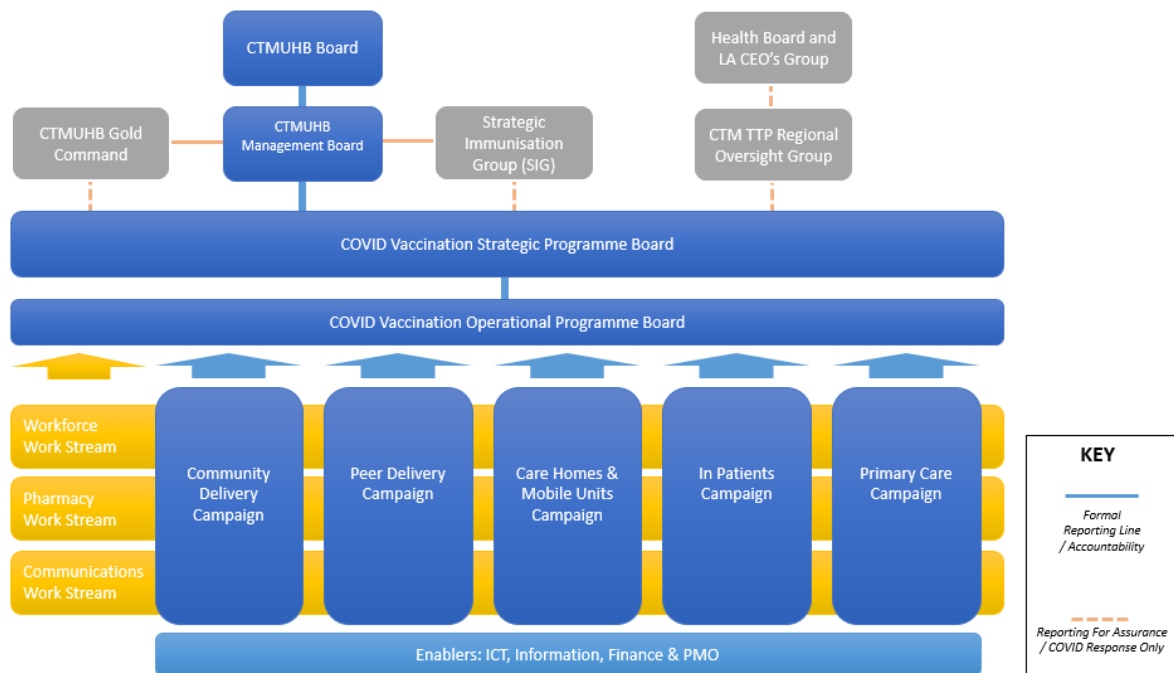
- 2.32 The current financial forecasting indicates costs in 2020/2021 of c£2.3m across the vaccination programme. Whilst this is based on the planning assumptions that were understood prior to Christmas, work is ongoing to re-model based on the current plan. An initial high level

assessment of the impact of the changes would indicate that any change in the financial forecast, whilst likely to be minimal, may reflect an increase.

2.33 As part of the current re-modelling a robust forecast for 2021/2022 is also being developed which will reflect the financial implications of delivering phase 2 priority groups to 9.

Governance Arrangements

2.34 Governance arrangements for the Vaccination Campaign were strengthened in the beginning of January 2021. The Campaign is taking applying programme management principles. Alongside senior clinical and public health leads, the Director of Planning and Performance (Interim) appointed as Senior Responsible Officer with the Director of Public Health as the Health Boards Executive Lead.



3. KEY RISKS/MATTERS FOR ESCALATION TO BOARD/COMMITTEE

3.1 The greatest risk to this ambitious vaccination programme is the supply of vaccines. Whilst we have planned on expected levels of vaccine, the later weeks of Phase 1 are still not confirmed fully. This will be difficult to mitigate as the supply is very much out of the hands of the Health Board. However, we may experience the reverse and have the opportunity for more vaccine. If this were to happen we have the flexibility in the community vaccination centres and Primary Care to extend capacity and allow us to speed up our vaccination campaign.



- 3.2 The availability of staff to meet the demands of this programme has been challenging at times. We have built in a buffer to account for sickness or volunteers dropping out.
- 3.3 As with any new system and process, and particularly one implemented at pace, data quality has been a problem. In addition to the backlog referred to earlier. In particular there have been typographical mistakes in relation to the batch number of the vaccine and also in relation to the dilutant in the case of the Pfizer vaccine. These have been identified and corrected, with additional steps being put in place to prevent these happening again.
- 3.4 The recording of reasons why a vaccine has not been administered, be that for medical reasons or a refusal, is currently difficult to capture. WIS system changes are being considered to support operational staff capture this important detail.
- 3.5 Further enhancements to the available data for priority groups have been requested from NHS Wales Informatics Service (NWIS) NWIS, such as the care home employer for care home workers who have not yet received the vaccine.

4. IMPACT ASSESSMENT

Quality/Safety/Patient Experience implications	Yes (Please see detail below)
	All explored in the report itself
Related Health and Care standard(s)	Governance, Leadership and Accountability
	Staff and Resources
Equality impact assessment completed	No (Include further detail below)
Legal implications / impact	There are no specific legal implications related to the activity outlined in this report.
Resource (Capital/Revenue £/Workforce) implications / Impact	Yes (Include further detail below)
	c£2.3m in 20/21



Link to Strategic Well-being Objectives	Work with communities and partners to reduce inequality, promote well-being and prevent ill-health
--	--

5. RECOMMENDATION

- 5.1 The Health Board is asked to **NOTE** this report and **APPROVE** the latest COVID-19 mass vaccination plan for Phase 1.